

GOUCHER
FAMILY
SUMMER SERIES:

PREPARING FOR
ARRIVAL!

29 JULY 2024



GUESTS

JOHN MICHAEL HAKY, ASSOCIATE DIRECTOR OF RESIDENTIAL LIFE

DENZEL STEWART, ASSISTANT DIRECTOR OF STUDENT ENGAGEMENT

MELISSA ALEXANDER, DIRECTOR OF THE LAUNCH NETWORK

KAREN SYKES, DIRECTOR OF INTERNATIONAL STUDENT SERVICES

MEGAN FULTZ, SENIOR ASSOCIATE ATHLETIC DIRECTOR

DR. KATE CARNELL, ASSISTANT VICE PRESIDENT FOR STUDENT ENGAGEMENT

MOVING IN



FOR LAUNCH, STUDENT-ATHLETES, AND AUGUST 17ERS MOVING IN TO THE FIRST-YEAR VILLAGE...

MARK YOUR CALENDAR!

- **LAUNCH SCHOLARS ARRIVE ON AUGUST 3**
- **EXCHANGE & INTERNATIONAL STUDENTS ARRIVE AROUND AUGUST 13**
- **FALL STUDENT-ATHLETES ARRIVE ON AUGUST 15**
- **ALL REMAINING STUDENTS NEED TO ARRIVE ON AUGUST 17**



WHEN WE GET TO CAMPUS, WHERE DO WE GO?

RESIDENTIAL STUDENTS

- ARRIVE IN THE FIRST YEAR VILLAGE (#6)
 - PAGLIARO-SELZ HALL LOBBY (#6A)
- PLEASE ARRIVE AT THE TIME YOU WERE ISSUED BY YOUR DIRECTOR OR OFFICE OF RESIDENTIAL LIFE.
- HAVE YOUR PHOTO ID READY TO GO!
- PARKING & UNLOADING
- HOLDS ON ACCOUNTS
- MENINGITIS WAIVER MUST BE COMPLETE & UPLOADED TO MOVE IN

HELPFUL HINTS

- IF YOU 'VE ORDERED ITEMS FOR DELIVERY TO CAMPUS, THE CAMPUS POST OFFICE (#5) IS OPEN FROM 9 AM – 3 PM.
- IF YOU NEED TO SHOP AFTER YOU 'VE MOVED IN, PLEASE RETURN TO CAMPUS AT 12:45 PM OR LATER. IF YOU CAN CARRY YOUR ITEMS FROM THE PARKING LOT, THEN RETURN AT ANY TIME.
- THE MARY FISHER DINING HALL WILL BE AVAILABLE ON AUGUST 17 FOR DINING AT LUNCH TIME (11:30 AM – 2 PM). MEAL PLANS ARE IN EFFECT. GUESTS CAN PURCHASE A MEAL AT THE DOOR.
- THE CAMPUS STORE, LOCATED ON THE LOWER LEVEL OF THE ATHENAEUM (#2) IS OPEN FROM 9 AM – 4 PM ON AUGUST 17.

WHEN WE GET TO CAMPUS, WHERE DO WE GO?

COMMUTER STUDENTS (AUGUST 17 ONLY)

- PARK IN THE DORSEY CENTER PARKING LOT
- ARRIVE IN THE MARY FISHER HALL (#15) BETWEEN 1-2 PM.
- HAVE YOUR PHOTO ID READY TO GO!
- RESOLVE HOLDS ON ACCOUNTS
- COMMUTER STUDENT WELCOME MEETING 7:15 PM

LAUNCH SCHOLARS NETWORK ARRIVAL



SUMMER LAUNCH MOVE-IN LOGISTICS:

- MOVE IN IS SATURDAY, AUGUST 3 FROM 9 AM – 12 PM!
- FOLLOW THE SUMMER LAUNCH SIGNAGE & YELLOW BALLOONS PLACED ALONG CAMPUS TO THE FIRST YEAR VILLAGE.
- CHECK-IN WILL BE IN PAGLIARO SELZ HALL.

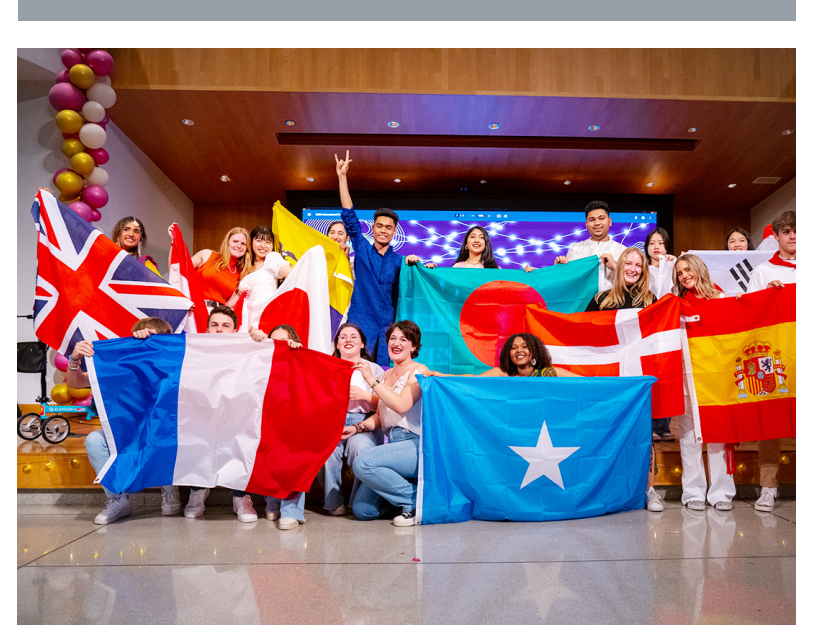
SATURDAY, 8/3 SCHEDULE:

- 9 AM – 12 PM: MOVE IN
- ARRIVAL – 4:15: FREE TIME
- 4:30 – 5:30 PM: WELCOME EVENT
- 5:30 – 6:15 PM: FAMILY & FRIENDS SESSION
- 5:30 – 7:00 PM: SCHOLARS INTRO & FUN
- 6:15 PM: FAMILIES & FRIENDS DEPART

EXCHANGE & INTERNATIONAL INFORMATION

INTERNATIONAL MOVE-IN LOGISTICS:

- PLEASE ARRIVE THE EVENING OF AUGUST 12 OR ANYTIME ON AUGUST 13.
- COMPLETE THE ARRIVAL FORM ([LINK](#)).
- USE THE DISCORD CHANNEL TO COORDINATE WITH OTHERS, IF YOU WANT TO TRAVEL TO CAMPUS TOGETHER.
- IF USING A RIDE SERVICE, YOU SHOULD SELECT "GOUCHER SPORTS AND RECREATION (UBER) OR PILATES CENTER AT GOUCHER COLLEGE (LYFT).
- WHEN YOU ARRIVE TO CAMPUS, WHATSAPP ONE OF THE INTERCONNECT ASSISTANTS TO MEET YOU.
- THERE WILL BE A CAMPUS TOUR AND SHOPPING TRIP ON THE ARRIVAL DAY.
- THE INTERCONNECT PROGRAM WILL BEGIN WITH BREAKFAST AT 8:30 A.M. IN BUCHNER, ALUMNAE / I HOUSE ON WEDNESDAY, AUGUST 14.



FALL STUDENT-ATHLETES INFORMATION

TEAM ARRIVAL SCHEDULE

AUGUST 13 – WOMEN'S SOCCER WILL MOVE IN UPON RETURN FROM INTERNATIONAL TRIP

AUGUST 15

10 AM – 10:30 AM

10:30 AM – 11 AM

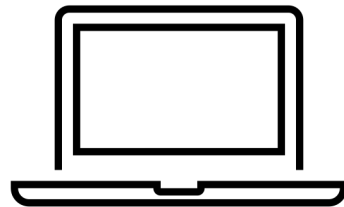
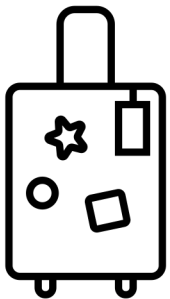
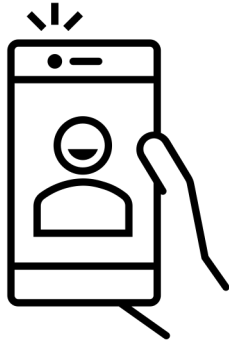
11 AM – 11:30 AM

MEN'S SOCCER & W. SOCCER ARRIVAL

FIELD HOCKEY, VOLLEYBALL ARRIVAL

CROSS COUNTRY ARRIVAL

FRIENDLY REMINDERS



- **SUBMIT YOUR SELFIE!** (SELFIE@GOUCHER.EDU)
- **SUBMIT YOUR HOUSING APPLICATION!**
- **UPLOAD ALL HEALTH FORMS TO MEDICAT!**
- **REGISTER YOUR VEHICLE!**
- **PACK!**
- **BRING THE DOCUMENTS FOR STUDENT EMPLOYMENT!**
- **CHECK OUT WHAT TECHNOLOGY TO BRING!**
- **PURCHASE TEXTBOOKS!**
- **CHECK YOUR GOUCHER EMAIL DAILY!**

NEW STUDENT ORIENTATION

AUGUST 17-21, 2024

STUDENT
SCHEDULE

GOUCHER
GUIDES

PARENT
SCHEDULE

NEW STUDENT
CONVOCATION





QUESTIONS?????